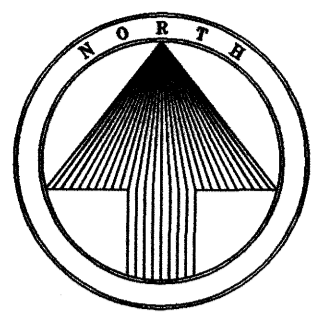


PART OF THE W1/2 OF SECTION 16 AND PART OF THE E1/2 OF SECTION 17, T-2-N, R-14-W, LITTLE ROCK, PULASKI COUNTY, ARKANSAS...



Scale 1" = 100 ft

CERTIFICATE OF SURVEYING ACCURACY

I, PAUL M. WHITE, HEREBY CERTIFY THAT THIS PLAT CORRECTLY REPRESENTS A BOUNDARY SURVEY MADE OR VERIFIED BY ME...

10/31/05 DATE OF EXECUTION PAUL M. WHITE REGISTERED LAND SURVEYOR NO. 1281, ARKANSAS

CERTIFICATE OF OWNER

WE, THE UNDERSIGNED, OWNERS OF THE REAL ESTATE, SHOWN AND DESCRIBED HEREIN, DO HEREBY CERTIFY THAT WE HAVE LAID OFF, PLATTED, AND SUBDIVIDED, AND DO HEREBY LAY OFF, PLAT, AND SUBDIVIDE SAID REAL ESTATE IN ACCORDANCE WITH THIS PLAT.

10-31-05 DATE OF EXECUTION DELTIC TIMBER CORPORATION # 7 Chenal Club Blvd. Little Rock, Arkansas

D.R. PAGE INSTRUMENT NO. 88-61004

CERTIFICATE OF ENGINEERING ACCURACY

I, TIMOTHY E. DATERS, HEREBY CERTIFY THAT THIS PLAT CORRECTLY REPRESENTS A PLAN MADE BY ME, AND THAT THE ENGINEERING REQUIREMENTS OF THE LITTLE ROCK SUBDIVISION RULES AND REGULATIONS HAVE BEEN COMPLIED WITH.

10-31-05 DATE OF EXECUTION TIMOTHY E. DATERS REGISTERED PROFESSIONAL ENGINEER NO. 5033, ARKANSAS

CERTIFICATE OF FINAL APPROVAL

PURSUANT TO THE LITTLE ROCK SUBDIVISION RULES AND REGULATIONS, AND ALL OF THE CONDITIONS OF APPROVAL HAVING BEEN COMPLETED, THIS DOCUMENT IS HEREBY ACCEPTED...

10/31/05 DATE OF EXECUTION LITTLE ROCK PLANNING COMMISSION

CERTIFICATE OF RECORDING

THIS DOCUMENT, NUMBER 2005091850, FILED FOR RECORD 31 Oct, 2005, IN PLAT BOOK H, PAGE 512.

GENERAL NOTES:

- 1. 1/2" IRON PINS WERE SET AT ALL LOT CORNERS
2. ALL EASEMENTS SHOWN ARE TO BE USED FOR DRAINAGE AND/OR UTILITIES.
3. LOTS WITH ROUNDED CORNERS ARE MEASURED TO A POINT OF INTERSECTION OF LOT LINES AND NOT POINTS ON A CURVE.
4. DISTANCES SHOWN ALONG CURVES ARE CHORD DISTANCES.
5. ALL FRONT BUILDING SET-BACK LINES ARE 25' (25' B.L.)
6. ERROR OF CLOSURE: EXCEEDS 1:50,000
7. RADII AT INTERSECTION OF STREET RIGHT-OF-WAYS ARE 25.0', UNLESS NOTED OTHERWISE.
8. ALL TRACTS MAY BE USED AS EASEMENTS FOR DRAINAGE AND/OR UTILITIES. REFER TO BILL OF ASSURANCE FOR RESTRICTIONS ON USE.
9. LOTS 36, 37, 64 AND 65, BLOCK 72 AND LOTS 12 AND 13, BLOCK 80, HAVE A 15.0' UTILITY/DRAINAGE EASEMENT ACROSS THE FRONT ADJACENT TO THE STREET. ALL OTHER LOTS EXCEPT LOT 55, BLOCK 72, HAVE A 10' UTILITY/DRAINAGE EASEMENT ACROSS THE FRONT ADJACENT TO STREET.

NO PORTION OF THIS PROPERTY IS WITHIN THE 100 YEAR FLOOD BOUNDARY AS SHOWN ON THE FLOODWAY, FLOOD BOUNDARY AND FLOOD INSURANCE WORK MAP FOR LITTLE ROCK, ARKANSAS.

THIS PLAT CORRECTED AND RE-RECORDED DUE TO ERROR IN LEGAL DESCRIPTION

CORRECTED PLAT OF LOTS 33-53, BLOCK 71; LOTS 35-69, BLOCK 72; LOTS 5-9, BLOCK 78; LOTS 1-24, BLOCK 80; LOTS 1-18, BLOCK 81; LOTS 1-19, BLOCK 82; TRACT C, BLOCK 71; TRACT B, BLOCK 72

CHENAL VALLEY

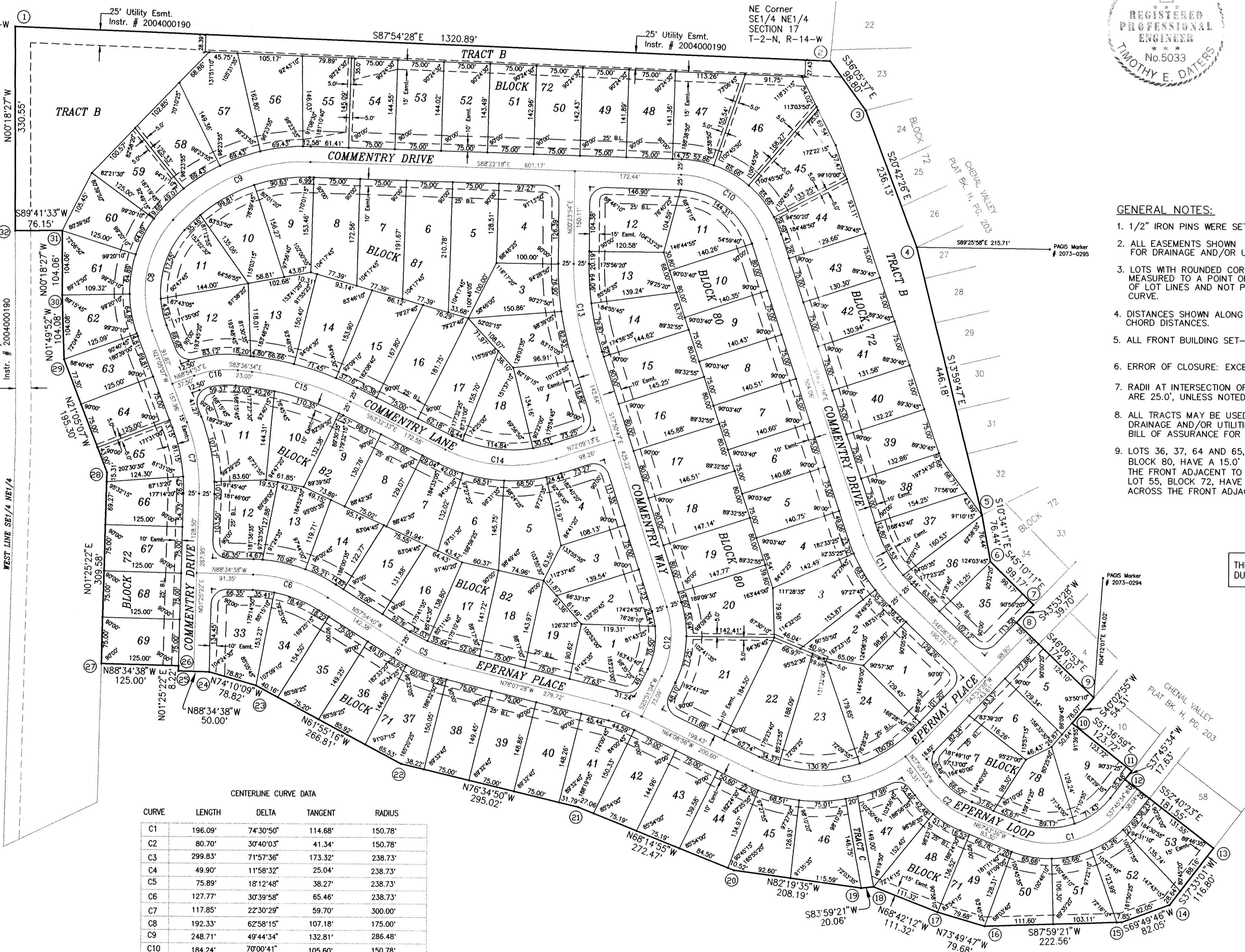
AN ADDITION TO THE CITY OF LITTLE ROCK, ARKANSAS

To be known as "EPERNAY PLACE"

PART OF SECTION 16 AND 17 T-2-N, R-14-W PULASKI COUNTY, ARKANSAS AUGUST, 2005

WHITE-DATERS & ASSOCIATES, INC. CIVIL ENGINEERING, LAND PLANNING & DEVELOPMENT, SURVEYING 24 RAHNING CIRCLE LITTLE ROCK, ARKANSAS 72223

NW Corner SE1/4 NE1/4 SECTION 17 T-2-N, R-14-W



ARKANSAS STATE PLANE COORDINATES (NORTH ZONE)

Table with 2 columns: Station, Easting, Northing. Lists coordinates for stations 1 through 32.

CENTERLINE CURVE DATA

Table with 4 columns: Curve, Length, Delta, Tangent, Radius. Lists data for curves C1 through C16.